

STRAIGHT FORWARD & ON TARGET

Local Business News You Can Use



Inside this issue:

- Pg. 2
HMH Carmi Family Clinic Continued
- Pg. 3
ED Report
- Pg. 4
HMH Telemedicine
- Pg. 5
CEO Update
- People's Bank Receives Award
- Pg. 6
Joyner Therapy Services
- Pg. 7
The Taco Factory
- Pg. 8
First Mid-IL Bank and Trust
- Welcome New Members
- Pg. 9
Escapes Travel
- Pgs. 10-15
It's a White county Christmas
- Pg. 22
Coming Events

DECEMBER 2015

VOLUME 6, ISSUE 12

Business Spotlight: Hamilton Memorial Hospital Carmi Family Clinic

Hamilton Memorial Hospital Carmi Family Clinic understands that life is too busy to make frequent out-of-state trips for health care needs. From routine care like sore throats and colds, to more acute needs like chronic disease management, X-ray, and comprehensive lab work the HMH Carmi Family Clinic on Oak Street has White County families covered!



HMH Carmi Family Clinic medical providers Kathy Taylor, FNP and Wes Henson, FNP (photo provided)

“It’s our goal at HMH Carmi Family Clinic for people to know they can count on us for the care they need, when and where they need it, right here at home in White County,” said Greg Sims, CEO of Hamilton Memorial Hospital.

HMH Carmi Family Clinic features extended medical clinic, lab, and X-ray hours Monday through Friday until 6pm and same-day comprehensive lab results are available for patients having lab work drawn before 10am. Walk-ins are welcome that the HMH Carmi Family Clinic.

Clinic family nurse practitioners Wes Henson and Kathy Taylor bring years of medical expertise and compassionate care to HMH Family Clinic.

“Wes and Kathy are a team of providers that dedicate themselves to not only the utmost quality, but they also deeply care about the people that entrust them with their healthcare – that’s what makes our Family Clinic and our Hospital so unique,” added Sims. (continues on page 2)

Next Board Meeting

4:30 p.m.

December 10

City Council Chambers

Carmi Family Clinic continued...

Specialty care offerings will also continue to grow at the HMH Carmi Family Clinic in the coming year. Obstetrics / gynecology including a full-range of women’s health care will soon be available through Heartland Women’s Health Care. Orthopedic specialty care is currently offered on Wednesdays through Wabash General Hospital.

A unique partnership with Wabash Christian Therapy makes outpatient therapy services convenient at the Oak Street location by providing easily accessible comprehensive therapy care and medical care all at one location.

“We will continue to expand specialty care and diagnostics that we offer at the HMH Carmi Family Clinic to meet the ever-changing needs of the area – with our Family Clinic there will continue to be a broader spectrum of care available to Carmi and all of White County,” stated Sims.

Family Clinic, Lab, & X-Ray | Open Monday – Friday 8am – 6pm | 618.382.5030
Wabash Christian Therapy | Open Monday – Friday 7am – 5pm | 618.382.2927
Wabash General Hospital Orthopedic Clinic | Wednesdays | 618.263.6400
1112 Oaks Street | Carmi, Illinois

Outpatient Therapy Services include:

- Physical Therapy
- Occupational Therapy
- Speech Therapy
- Stroke Recovery
- Orthopedic surgery recovery
- Sports injury recovery / taping
- Fall prevention / Balance impairment
- Back pain / Sacroiliac dysfunction
- Vestibular therapy / Dizziness
- Pain management / Wound care
- Speech & language dysfunction
- Pulmonary & cardiac recovery
- Urinary incontinence
- Lymphedema
- Cognitive / Memory impairment
- Concussion management
- Pediatrics

HMH Family Clinic:

- Illness treatment
- Infection treatment
- Stitches & sutures
- Flu shots
- Chronic disease management
- Physicals & sports physicals
- Allergy treatment
- Preventative care
- Women’s health care

Diagnostics:

- X-ray
- Same-day comprehensive lab/bloodwork
- EKG

From the Desk of the Executive Director...



*Holly Healy
Executive
Director*

As It's a White County Christmas begins to wind down, there are still a number of people that I need to thank. It has been a fun celebration– one I hope you and your family have enjoyed.

If you participated in the parade, watched the parade or helped me organize the parade– thank you. The parade takes a small army to organize and I truly appreciate the assistance.

Emmanuel United Methodist Church is once again holding their annual Cookie Sale. Thank you for allowing us to add this to our schedule.

First Christian Church is again presenting Bethlehem Revisited. Thank you for allowing us to add this to our schedule.

The American Legion is once again hosting Breakfast with Santa. Thank you for continuing this tradition so many children enjoy.

WROY/WRUL is again hosting HoHo Radio on December 10. Thank you for doing this to bring joy to so many children in your listening area.

The Carmi Library is once again hosting a Story Hour with a special appearance by Santa. Thank you for allowing us to add this to the schedule.

The decorations throughout Carmi look beautiful. Thank you to the Mayor Pollard and the city employees who work tirelessly to make sure Carmi is decorated for the holiday season.

I'm sure I've made the mistake of leaving someone out, so thank you if you have participated in any way.

Last but not least, thank you to our sponsors. Without our sponsors, It's a White County Christmas would not be possible.

Our last It's a White County Christmas event will be a Winter Gala with Rob Endicott on January 9, 2016 at the Carmi Elks. Tickets are \$25 per person or \$25 per couple and must be purchased in advance at the Chamber office. The public is welcome with advance ticket purchase. Please plan to attend!

From my family to yours, may you have a very merry Christmas and a joyous 2016.

-Holly

Congratulations to Martha Templeton!
Winter of the Willow Tree Nativity during
the Holiday Shopping Stroll from
The Courtyard

 **wabash heritage apartments**
The Best kept Secret in town...

IMMEDIATE OPENING
Spacious 2-Bedroom Units

Its Included!

- ✓Utilities
- ✓Cable TV
- ✓Sewer
- ✓Water
- Social activities
- On-site podiatrist
- Must be 62 years of age and meet income requirements.

CALL US TODAY 618-382-2902

  wabash heritage apartments
210 Wabash Drive • Carmi, IL 62821 

HAMILTON MEMORIAL HOSPITAL OFFERS TELEMEDICINE SERVICES FOR STROKE PATIENTS

Every 3-4 minutes, someone dies from a stroke. Thankfully, Hamilton Memorial Hospital in McLeansboro now offers state-of-the-art telemedicine technology that puts a patient in touch with immediate time-saving, life-saving stroke evaluation and treatment. Early access to advanced neurology specialists can make the difference at the most critical time – when lives are saved and brain function can be preserved.

“The telemedicine service means if you arrive in the emergency room with symptoms of a stroke, you have technology that gives immediate live access to doctors at the SIH Brain and Spine Institute in Carbondale – the largest neuroscience team in the region – 24 hours a day, seven days a week,” said Patty Blazier, Chief Nursing Officer at Hamilton Memorial Hospital.

Using computer-based, robotic cameras and tools, specialists like Alejandro Hornik, MD, a fellowship trained neurointensivist, are able to see and speak with attending physicians and medical staff while interacting with the patient and family in real-time.

“Telemedicine provides us with a tremendous tool to provide emergent stroke diagnosis and care in your community hospital; the speed and efficacy of our collaboration has an immediate impact on life-saving care,” Dr. Hornik said. Time is of the essence during the diagnosis and treatment of stroke; the initial hours are critical for patients to receive a clot buster to thwart life-threatening and debilitating outcomes.

The telemedicine program is the result of a Delta Health Care Services Grant from USDA Rural Development which was awarded to Southern Illinois Healthcare to work with additional hospitals and health care organizations to create the Southern Illinois Telemedicine Initiative. It allowed SIH to purchase equipment to connect rural hospitals to improve the accessibility and quality of patient care. The equipment is then owned by each participating hospital. The initiative enables participating organizations to deliver education, diagnosis or medicine between remote locations via telecommunications in “real time.”

“The Delta Health Care Service Grant incorporates the ability for teleneurology and telepsychiatry in the delta health care region of Southern Illinois. The patients are able access, via telemedicine, care by a specialty physician,” Catherine Hungate Telemedicine Coordinator for SIH, stated.

“This type of technology is becoming vitally important to rural medicine especially for patients that are experiencing very serious medical conditions, such as stroke. To be able to be assessed and a plan of action put in place by a fellowship trained neurointensivist within minutes of presenting at our ER will undoubtedly save lives,” said Greg Sims, CEO Hamilton Memorial Hospital.

The Southern Illinois Telemedicine network includes eight area hospitals as well as Southern Illinois University School of Medicine, Illinois Hospital Association and Connect SI.

Why is immediate access to care important for stroke patients?

There is a short window of time when evaluation and treatment of a stroke is critical – this is when lives can be saved and brain function preserved. That's why it's important to know the symptoms and call 9-1-1 if you or someone you know is experiencing any of the warning signs.

What are the symptoms of a stroke?

Stroke symptoms include:

Sudden numbness or weakness in the face, arm or leg, especially on one side of the body

Sudden confusion, trouble speaking or understanding

Sudden difficulty seeing in one or both eyes, dizziness, loss of balance or coordination

Sudden severe headache with no known cause

Act F.A.S.T.!

Follow this F.A.S.T. acronym if someone you know is exhibiting any of the above symptoms:

FACE - Ask the person to smile. Does one side of the face droop?

ARMS - Ask the person to raise both arms. Does one arm drift downward?

SPEECH - Ask the person to repeat a simple phrase. Is his/her speech slurred or strange?

TIME - If you observe any of these signs, call 9-1-1 immediately!

CEO Board Elects Officers, Discusses Program

With a vision to help grow White County in the long term, the Carmi Chamber of Commerce has purchased the CEO Program materials from the Midland Institute in Effingham, Illinois to bring the CEO Program to White County. Targeted to high school juniors and seniors, the program will be a coop between Norris City- Omaha- Enfield and Carmi White County High School and will start fall 2016.

On November 12, 2015, White County CEO Board members attending a training session in Effingham and learned a great deal about implementing the program. Current CEO Board members are Dr. Clint Taylor, Taylor Eye Care; Donnie Wilson; Nikki Roser, First Bank; Matt Vollman, NCOE School District; Tara Riggs; Jarrod Newell, Carmi White County School District; Chris Cantrell, Royal Drilling and Holly Healy, Carmi Chamber of Commerce. Dr. Karen Weiss of Southeastern Illinois College will serve in an ex-officio capacity and be the administrator of the program.

The CEO Board met on November 18, 2015 and elected Dr. Clint Taylor as Chairman, Jarrod Newell as Chairman Elect, Nikki Roser as Treasurer and Holly Healy as Secretary. Chairman Taylor also appointed several committees that will help bring the program to fruition.

The Board discussed the student selection process and applications will be in the schools by mid-December. The mentoring program was also discussed.

Businesses and individuals interested in investing in the program, either financially or with their time, should contact the Carmi Chamber of Commerce at 382-7606 or any CEO Board member for further information.

Peoples National Bank receives award from the Illinois Housing Development Authority

On November 17, 2015, Peoples National Bank was recognized by the Illinois Housing Development Authority with three awards for top mortgage production in Southern Illinois. Peoples National Bank received an award as the #2 Lender in Southern Illinois for IHDA mortgage production in 2014. Joy Schroeder, Mortgage Specialist in Mt. Vernon and Salem, received an award as the #3 Loan Officer in Southern Illinois for IHDA mortgage production in 2014. John Streuter, Mortgage Manager in Marion, Carterville and Herrin, received an award as the #1 Loan Officer in Southern Illinois for IHDA mortgage production in 2014.

During 2014, Peoples National Bank originated 164 IHDA loans totaling over \$12 million. Joy Schroeder originated 41 loans totaling over \$2.5 million and John Streuter originated 72 loans totaling over \$6 million. Peoples National Bank and IHDA are proud partners in providing low interest loans with down payment assistance programs to first time homebuyers.

Joyner Therapy October Patient of the Month

Brenda Musgraves has been selected as the recipient of October's Patient of the Month with Joyner Therapy Services. Brenda has been coming to therapy since early September for Plantar Fasciitis. She has been undergoing ASTYM treatments, ultrasound, and stretching to improve her ability to walk with decreased pain in her feet. Brenda has been dealing with Plantar Fasciitis in both feet for the past couple of years, however, it had gotten worse over the past 9 months. She was having significant pain in the early AM hours and was unable to walk or stand on her feet for more than a few minutes without pain. Since Brenda has been participating in therapy and performing her home exercise program, she is now able to perform tasks at home, go back to performing her hobbies such as taking care of animals on the farm, riding horses, etc., has improved her gait pattern, and is now having no pain in the early AM hours. It has been a privilege and a pleasure to work with Brenda and we look forward to seeing the end result of her hard work and dedication.— Submitted



Physical Therapist and owner, Dr. Brian Joyner, PT, DPT, Brenda Musgraves and Physical Therapist Assistant Brianne Douthitt. (photo provided)

Joyner Therapy November Patient of the Month

November Patient of the Month Paul Glover began occupational and physical therapies in October due to injuries sustained while working with his horse. He underwent a rotator cuff repair and had a hip injury. As with rotator cuff repairs, he was unable to use his right arm, and the hip injury caused pain with transfers and ambulation.

Occupational therapy has allowed Paul to progress through the passive and active-assist range of motion phases of the shoulder rehab. His active shoulder range of motion is now within normal limits and his strength is improving. Paul will continue to work with Megan to advance his strength and endurance.

Through physical therapy, Paul is now having minimal to no pain in his hip. He is able to transfer and walk further distances before experiencing pain. Paul contributes his decreased hip pain to ASTYM.

It has been joyful working with Paul; he always keeps us laughing! We will be sad to see him go once he has been fully rehabilitated.

-Submitted



November Patient of the Month from Joyner Therapy Services, Paul Glover. Paul is pictured with Physical Therapist, Dr. Jessica Cook, PT, DPT, and Occupational Therapist, Megan Robershaw, OTR/L. (photo provided)

The Taco Factory Holds Official Groundbreaking Ceremony

Kevin and Heather Price, owner of the The Taco Factory held an official groundbreaking ceremony at the site of the new restaurant. The new building will be located at the corner of Industrial and Falcon Avenue in West Carmi.

After years of planning, the city of Carmi and neighborhood residents are excited about the project and feel that The Taco Factory will be a valued eatery in Carmi. “We are very excited for the Price’s as they create this new business and jobs for Carmi,” Jeff Pollard, Mayor of Carmi.

The restaurant will be 1,750 square feet of space with an industrial theme, constructed by Jeff French, “I am thrilled to make Heather’s vision of the building a reality.”

Specializing in Mexian/American cuisine, diners can enjoy eating in or driving thru. Drive thru patrons will enjoy face-to-face ordering and pickup. “I would like to thank everyone who came out today for the ground breaking of The Taco Factory. I am overwhelmed by the support from the City of Carmi and Mayor Jeff Pollard, Mike Buckman, and Sandra Irvine. These three people have held my hand over the past few months and led me in the right direction to get this started. Also, thank you to Jeff French of Jeff French Construction for all of your help and advice. I look forward to working with you and seeing this become a reality. About a year ago I started working with Walter Blake, the founder of Taco Tierra, his mentorship and leadership has been and will continue to be invaluable to us. There were several people who showed up to celebrate with us this morning and to each and every one of you I am thankful for your love, support, and endless encouragement,” stated Heather Price, Owner.

HJP Properties, LLC is utilizing funds available thru the City of Carmi’s Revolving Loan Fund. First Bank in Carmi is also providing financial support, plus the personal investment of the Price’s. Nikki Roser of

First Bank, “We are excited to be a part of this business expansion in Carmi.”

The completion date for the project is projected for Summer 2016.

Find The Taco Factory on Facebook or follow them on Twitter @Carmi_Tacos, or on their website carmitacofactory.com to follow the construction process.

- Submitted by Seitz Life Art & Design



Pictured (left to right): Nikki Roser, First Bank; Sandra Irvine, City of Carmi; Rick Marshall, Marshall Electric; Heather Price & Kevin Price, Owners; Jeff Pollard, Mayor of Carmi; Jeff French, Jeff French Construction; Holly Healy, Carmi Chamber of Commerce Director; and Mike Buckman, City of Carmi. (Photo provided by Seitz Life Art & Design)

FIRST MID-ILLINOIS BANK & TRUST NAMES BILL SCHLINKERT LEAD TRUST EXECUTIVE



Bill Schlinkert
(photo provided)

First Mid-Illinois Bank & Trust recently welcomed Bill Schlinkert as Senior Vice President, Lead Trust Executive. In this role, Schlinkert will be responsible for the overall management of the operations and administration functions within the Trust Division.

Schlinkert has over 39 years of experience in the financial industry. Prior to his arrival at First Mid, he served as Vice President, Fiduciary Segment Manager and National Manager for account Terminations with Wells Fargo in Las Vegas, Nevada. He also held the role of First Vice President Head of Personal Trust Administration with MB Financial in Rosemont, Illinois.

Brad Beesley, Executive Vice President, commented, "I'm pleased to welcome Bill to the First Mid Trust & Wealth Management team. Bill has valuable experience and a track record of providing quality customer service and counsel to his clients."

Schlinkert holds a Bachelor of Science Degree in Business Administration from MacMurray College, is a graduate of the American Bankers Association National Trust School and Cannon Financial Institute Trust School.

About First Mid-Illinois Bank & Trust, N.A.:

First Mid-Illinois Bancshares, Inc. is the parent company of First Mid-Illinois Bank & Trust, N.A. (First Mid) and First Mid Insurance Group. A community bank with over \$2 billion in assets headquartered in Mattoon, IL, First Mid offers comprehensive banking, trust and wealth management services, and insurance services. First Mid's mission is to fulfill the financial needs of our communities with exceptional personal service, professionalism and integrity, and deliver meaningful value and results for customers and shareholders. First Mid-Illinois Bancshares, Inc. stock is traded on the NASDAQ under the symbol FMBH. More information about First Mid is available at www.firstmid.com.

Welcome New Members

NewWave Communications

115 B E Cherry Street
Carmi, IL 62821
888-863-9928
Newwavecom.com

SeitzLife Art & Design

1084 County Rd 1700 N
Carmi, IL 62821
618-240-8127
Seitzlife.com

Escapes Travel and Cruises Offering Escorted Alaskan Cruise

JOIN US! Join Michelle Winters & Escapes Travel & Cruises on an ESCORTED group cruise on a 7 Night Alaska Inside Passage with Glacier Bay Cruise from June 11-18, 2016 on the Crown Princess.

Itinerary:

June 11 - Seattle, WA

June 12 - At Sea

June 13 – Juneau

June 14 – Skagway

June 15 - Cruising through Glacier Bay National Park

June 16 – Ketchikan

June 17 - Victoria, BC

June 18 - Seattle, WA

We will fly into Seattle on June 10 to do some sightseeing and spend the night. We will fly home on June 18. You can extend your stay before or after your cruise if you like.

Passports are NOT required but recommended. Payment plans are available through March 28, 2016!

Sample prices based on double occupancy: As of Oct. 16, 2016 - For 2 people per cabin, the inside rooms (no windows) prices start at \$999 per person, obstructed ocean view rooms start at \$1049 per person, unobstructed ocean view rooms start at \$1349 per person, balconies start at \$1799 per person and suites with balconies start at \$2149 per person.

Sample prices: As of Oct. 16, 2016 – For 4 people per cabin, the inside rooms (no windows) prices start at \$3922, obstructed ocean view rooms start at \$4348, unobstructed ocean view rooms start at \$5364, balconies start at \$6528 and suites with balconies start at \$7418. The prices for 4 are total for 4 people with tax.

Taxes and port charges are approximately \$219 per person. Gratuities, optional travel insurance, shore excursions and flights are additional.

Contact Michelle Winters at 618-382-2465 at Escapes Travel & Cruises for pricing and availability.



Thank you to our sponsors for



Festival Sponsor:



Geo N. Mitchell Drilling, Inc.

Silver Bell Sponsors:



State Farm[®]

James C Cook
(618) 382-7381
youragentjames.com

Hale

BODY SHOP, INC.
Carmi, IL
TEL: 382-8082



CRHPC
Christopher Rural Health
Planning Corporation
CRHPC Carmi Health Center



Brown's Fertilizer & Chemical



Official Media Partner of It's a White County Christmas

Mistletoe Sponsors:

Rush Appliance, Eastern Services, Tequilas Mexican Restaurant, McDonald's, Do or Dye Salon, Haley Production Company LLC, Fechter Farms, Inc., Roark Trucking, Cook Funeral Chapel, Joe's Lawn Care, Botsch and Associates CPA's, LLC, Carmi Veterinary Clinic, Yesterday's Drive In, Pundrakes, Merle Norman Cosmetics and Boutique

Snowflake Sponsors:

DiMaggio's, Stendeback Family Funeral Home, Ron Absher Auto Center



Schedule of Events

December 4-6

Bethlehem Revisited at First Christian Church

Fcccarmi.com for more information

December 5

Breakfast with Santa, 7-10am, Carmi American Legion (Santa arrives at 8am)

Kids, Inc. Holiday Home Tour, 10am—3pm

25th Annual Emmanuel Church Cookie Sale, 9am– Noon

December 10

HoHo Radio, 6-8pm on WRUL

December 12

Christmas Story Hour with Santa as a Special Guest at the Carmi Public

Library—1:00 pm

Craft and Vendor Show at the Floral Hall

December 19

Carmi League of Arts presents a Christmas Variety Show

2:30 pm—CWCHS

January 9, 2016

Carmi Chamber of Commerce Bicentennial

Winter Gala featuring the sounds of Rob

Endicott

Santa will be in his house in Veterans Park from 2-5pm on December 5, 6, 12, 13, 19 and 20. December 22 Santa will be in his house from 6-9pm.

Chamber Announces Bicentennial Winter Gala; Rob Endicott to Provide Entertainment

The Carmi Chamber of Commerce is pleased to announce a Bicentennial Winter Gala on Saturday, January 9, 2016 at the Carmi Elks' Lodge.

Doors will open at 6pm and hors d'oeuvres will be available, including shrimp cocktail, slider sandwiches, meatballs, sweets and a number of other items. A cash bar will be available throughout the evening.

Carmi native Rob Endicott has assembled an all-star lineup of musicians to join him in providing music for the evening.

Tickets for the event are \$25 each or \$45 per couple and must be purchased in advance at the Chamber office before December 31, 2015. Party attire is requested.

"The Gala provides a chance to celebrate the end of the holiday season and celebrate Carmi's Bicentennial. Come out and enjoy an evening of fine music and fellowship." noted Chamber Director Holly Healy.

The Gala is part of It's a White County Christmas, produced by the Carmi Chamber of Commerce, and brought to you in part by Geo. N. Mitchell Drilling, Inc.

Best It's a White County Christmas Window Winners Announced

Dave Matheny State Farm Insurance, located at 122 E Main in Carmi, has captured the Storefront Window Decorating Contest traveling trophy for their display of a wooden Christmas tree with photos of Christmas past. This year's theme was "Memories of Christmas Past."

Several divisional winners were announced: Most Artistic- Nancy J. Winter CPA, Most Creative- Brown's Fertilizer and Chemical and Best Traditional- Jodi Duncan Designs. Other entries included Karger Collectibles, Grant Gee Edward Jones, First-Mid Illinois Bank and Trust, Botsch and Associates CPA's and Logo Graphics.

"Decorations help remind us of the spirit of the season. We were glad to once again open this contest to all businesses in White County and encourage everyone to admire all the beautiful windows as you are out and about this Christmas season," noted Chamber Director Holly Healy.

It's a White County Christmas is produced by the Carmi Chamber of Commerce and brought to Geo. N. Mitchell Drilling Company, Inc.



Window at Dave Matheny State Farm Insurance.





2015 Miss Merry Christmas Pageant Winners



Junior Miss Merry Christmas Nellani Sullivan, Little Miss Merry Christmas Laney York, Miss Merry Christmas Elizabeth Gwaltney



Baby Miss Merry Christmas Emma Yearby and Tiny Miss Merry Christmas Nell Williams

Gingerbread House Decorating Contest Winners Announced



The Carmi Chamber of Commerce is pleased to announce the winners of this year's Gingerbread House Decorating Contest:

Age 8 and under: First Place- Natalie Cowling, Second Place- Eli Mosier

Age 9-13: First Place- Elizabeth Gwaltney, Second Place- Laney York

Family : First Place- Kayli, Jaden and Jack Larkin, Second Place- Emily and Hadley Williams

Entry from Scratch and Best Overall: First Place- Keith and Julie Jackson

First place winners in each category received \$15 in Carmi Dollars, while second place received \$10 in Carmi Dollars. The Best Overall received \$20 in Carmi Dollars.



Larkin Family gingerbread village.

Winning homes will be on display beginning the afternoon of November 23 in the L. Haas Store Museum window. Other gingerbread homes will be on display at the Carmi Chamber of Commerce.



Best Overall Gingerbread House made from scratch by Keith and Julie Jackson.

Those that entered the contest may pick up homes at the Carmi Chamber of Commerce beginning on November 30, 2015 during normal business hours.

It's a White County Christmas is produced by the Carmi Chamber of Commerce and brought to you in part by Festival Sponsor Geo. N. Mitchell Drilling Company, Inc.



Gingerbread house by Natalie Cowling.

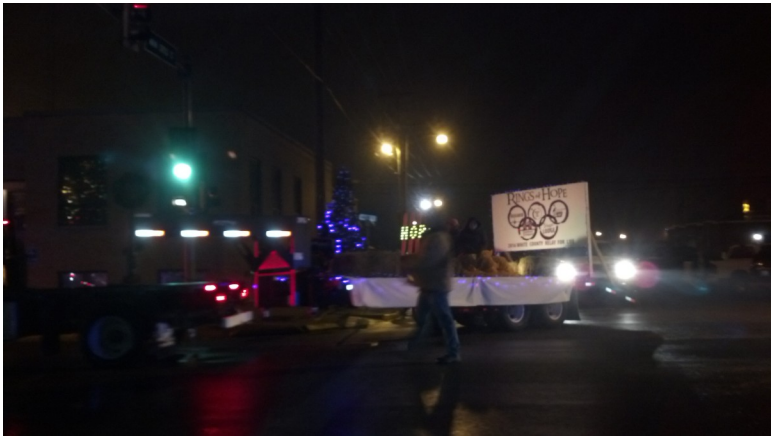


At right, gingerbread house by Elizabeth Gwaltney.


Out and About with the Chamber...



1st Place Float– Brown’s Fertilizer and Chemical (photo credit: Brown’s Fertilizer and Chemical)



2nd Place Float– Relay for Life



Kids Inc. is sponsoring a

Holiday Home Tour!

Saturday, December 5th from 10am - 3 pm

Homes featured will be decorated in their seasonal splendor!

Homes included on the tour are:

Cherie Barbre

The Social House

Whitney Barbre

Jamie and Michelle Burzynski

David and Phebe Port

Kent and Shannon Roser

Justin and Kate Simmons

This self-guided tour will begin at the home of Cherie Barbre, 306 3rd Street, where each guest can purchase a ticket for the tour for \$10. This is the only home that will be selling tickets!

All funds raised will be donated to the First Bank Giving Tree and P·A·W·S. for the Bulldog Tree to provide children in our community with a brighter Christmas.

Vendor Fair

Scentsy

Pampered Chef

Stampin Up

31

Nerium

18" Doll Clothes

Tupperware

Origami Owl

Pink Zebra

Paparazzi

DoTerra

Hippie Hill

Twisted Metalz

Grandpa's Sport Cards

Advocare

Deco Mesh Wreaths

Gina's Crafty Corner

Grace Jewelry

Calle Rosa Designs

Poore Girl Primitives

Haleigh-Claire's Cupcakery

Gourmet Creations

Alyson's Knit & Stitch

Real Time Pain Relief

** Many more items added daily

Food, Coffee and drinks will be served all day.



Dec 12, 2015

9am-3pm

WHITE COUNTY FAIRGROUNDS FLORAL HALL, CARM, IL

SHOW BENEFITS "OPERATION BE A BLESSING"

SAVED BY SANDRALISE WWW.CRESTOCK.COM



Join us for our

Holiday Open House!

Friday, December 11th

9:00 a.m. - 3:00 p.m.

*Register for our
Holiday Drawing!*



Member FDIC

FIRSTMID.COM



Make the Right Move.

With the seasons soon changing again, the messy winter weather will be here before you know it. Make the right move to Supportive Living of Wabash and experience true peace of mind.



supportive living of wabash

PRIVATE APARTMENTS AVAILABLE!

One-Month
FREE Cable!

- Full, Private bathroom with roll-in shower
- Kitchenette with sink, refrigerator and microwave
- Individually controlled heating and air conditioning
- Emergency call system in bedroom and bath
- Free Wi-Fi
- Three home cooked meals daily
- Weekly housekeeping and laundry provided
- On-site Podiatrist and Lab Draws
- Scheduled outings and activities
- Walking paths and covered patio

Call or come see us today!



532 Abelson Dr. Carmi, IL 62821 (618) 382-2900
www.wabashchristianretirementcenter.com





wabash **christian** therapy & medical clinic

1112 Oak Street • Carmi, IL • 618.382.2927 • 618.382.2906 **FAX**



**Thank you for another
great referral!**

A **WCTMC** Success Story:

“Therapy at WCTMC was very rewarding. The entire rehab team is very knowledgeable, well versed and thorough.”

— **John Carpenter**



JOB FAIR

December 9, 2015
10AM - 2PM

- **FT & PT CNAs (2p - 10p)**
- **PT Housekeepers**
- **Feeding Assistants**



wabash **christian** retirement center

a community of compassion

216 College Blvd. • Carmi, IL • 618.382.4644





**Are you hunting for
a great way to help
children and
families in need?**

**Join Baptist Children's Home & Family
Services for our Winter Waterfowl Hunt!**

**Monday, December 21, 2015
Grassy Lake Hunt Club - Ware, IL**

\$200 per hunter
Fee includes guided hunt,
coffee/donuts and lunch.

Group or Corporation _____

Person 1: _____ 2: _____

3: _____ 4: _____

TO REGISTER CONTACT BCHFS at (618) 382-4164. You can also register and pay
securely online at www.BCHFS.com, or by mailing this form and payment to
949 County Rd. 1300 N, Carmi, IL 62821. Make checks payable to BCHFS.

Special thanks to our sponsors:

- Grassy Lake Hunt Club
- Bantera Bank
- Masters Choice



**Baptist Children's
Home and Family
Services**

UPCOMING EVENTS

December 2015

December 4-6– Bethlehem Revisited presented by First Christian Church

December 5– Breakfast with Santa– 7-10 am

December 5– Kids, Inc. Holiday Home Tour

December 5– Emmanuel Church Cookie Sale

December 10– Chamber Board Meeting, 4:30 pm

December 10– HoHo Radio

December 12– Craft and Vendor Show at the Floral Hall

December 12– Library Story Hour with Santa at 1pm

December 19– League of Arts Christmas Variety Show, 2:30 pm, CWCHS

December 25– Merry Christmas!

December 31– Deadline to purchase tickets for the Winter Gala

January 1– Happy New Year!

January 6– January Newsletter Deadline



Santa will be in his house in Veterans Park from 2-5pm on December 5, 6, 12, 13, 19 and 20. December 22 Santa will be in his house from 6-9pm.



225 East Main Street

Carmi IL 62821

Phone:

618-382-7606

Email:

chamber@cityofcarmi.com

Website:

www.cityofcarmi.com

2015-2016 Chamber Officers

Andy Acord

President

Caleb Hughes

Vice President

Toby Brown

Secretary

Bryan Colwing

Treasurer

Debbie Hoskins

Past President

Holly Healy

Executive Director

2015 - 2016 Board of Directors

Kara Kessler	2013-2016
Megan Goff	2013-2016
Kendall Dale	2013-2016
Jeremy Jordan.....	2013-2016
Whitney Barbre.....	2014-2017
Cody Gottman	2014-2017
Nikki Roser.....	2014-2017
Heather Smith.....	2014-2017
Brock Bolerjack.....	2015-2019
Keith Botsch.....	2015-2019
Chris Cantrell.....	2015-2019
Ryan Mitchell.....	2015-2019
Dr. Jonah Rice.....	Ex-Officio
Mayor Jeff Pollard	Ex-Officio
Madison Botsch.....	Ex-Officio